

Location
Bobigny

Clients
Ministère De La Justice - APIJ

Team
Ateliers 2/3/4/ (architect) - Françoise Arnaud (landscape designer) - Sas Mizrahi (engineer)

Nature of the project
Public equipment

Program
Courtrooms, offices...

Status
Built

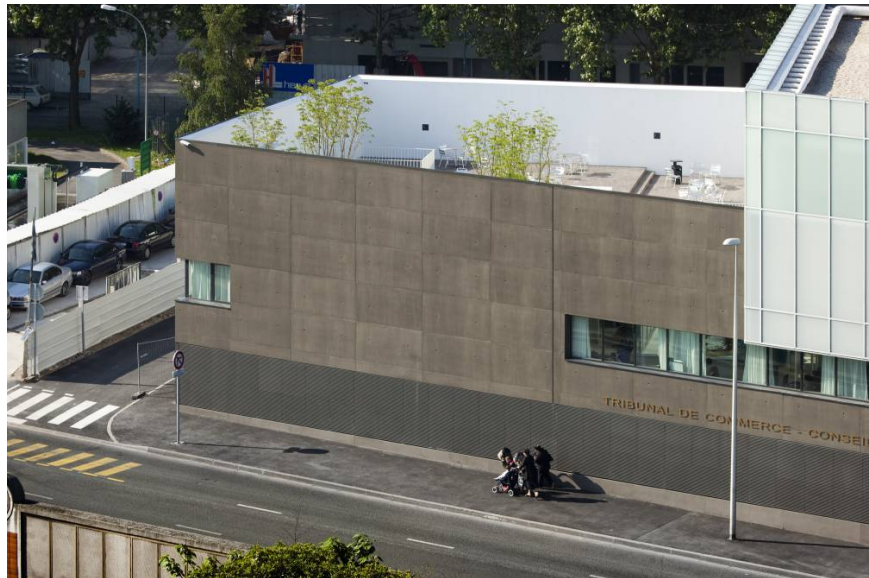
Area
7 000 m²

Calendar
Completion 2010

Cost
15 M€

Construction compagnies
CBC, General contractor

Credits
©Nicolas Fussler
©FG+SG Fernando Guerra



The project sets up the entire plot that is allocated. A massive dark concrete support protects the building on his outskirts and notes significantly this limitation. A cross fault create a transparence in the concrete support, from the Hector Berlioz street to Paul Vaillant boulevard, opening on theses urban spaces the entry, main space of the project composed by the patio and the hall which is called "salle des pas-perdus" in French .

One of these architectural goals of the project is the natural orientation and immediatly of the visitor to the jurisdiction of his choice. (commercial-court or labour court)

For that, the classical courthouse's square was replaced by a patio in the middle of the building:

From the outside place, even before having enter in the building, the public will identify the main interior spaces:

- The reception of the 2 jurisdictions,
- The lost-step room,
- The access of the courtrooms.

receptions spaces of the 2 jurisdictions are white, transparent, filled up light.

On the massive support is a translucent glass prism containing workspaces.

The glass skin preserve the privacy of users: from outside, the translucency bloks prying eyes, while inside this same translucent window lets in view of the entire surface.

This glass prism is like a monumental lantern lightly, an urban center, affirming the institutional status of this building.

Four lights wells and various interiors patios planted dig the building in his center.

They offer an inside landscap protected of the urban noises, a calm and serene atmosphere necessary for this institution.

This project expressed by a simple and orthogonal geometry provides a volumetric purified reading:

- Concrete support,
- Glass prism placed,
- Patio recessed.

In opposition of the dark support, these

