

Location
Nanterre

Clients
ADIM Paris Île de France (subsidiary company of VINCI Construction France)

Team
Ateliers 2/3/4/ (architect) - Acceo - Ae75 - Arcora - Berim - Egis - Elioth - Egis Concept - Peutz - Socotec Structure IDF (engineers)

Nature of the project
High Rise, Large buildings, Mixed-use

Program
730-bed hotel, offices, fitness, spa, swimming pool, restaurants, view point, and conference centre

Awards/Distinctions
BIM d'Argent 2018 winner

Status
In progress

Area
63 000 m²
200 meters high
54 floors

Calendar
Completion 2024

BIM
BIM 2 + BIM Management

Sustainable development
Breeam Excellent
LEED gold
HQE Excellent

Construction compagnies
VINCI Construction France

Credits
©Ateliers 2/3/4/ - Film ©Agence Martingale



An unusual tower with hanging gardens, in the centre of the new district La Défense, this X-metre tall skyscraper quite singularly extends the great historic axis of Paris.

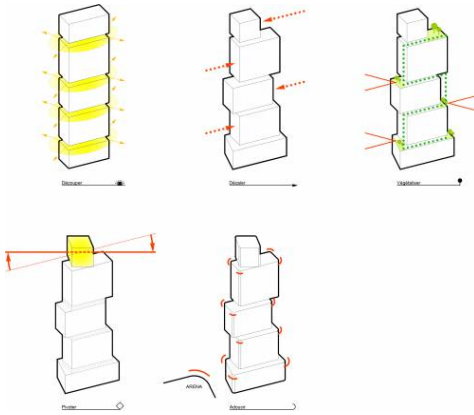
Through sliding, the superimposed volumes successively reveal three hotel complexes (2 to 4-star) and at roof level, a belvedere that caters to the general public or exceptional events.

At each interface a double height, extended by a garden terrace overlooking the city, accommodates the hotel lobbies. A double lift circuit, vertically extends the street space within the edifice to lead directly to each lobby and the belvedere, and then ensures access to intermediate floors of each hotel.

Through its brief, its accessibility and architectural treatment, the Grand Paris Hotel is like an open project that animates and intensifies the public space.

légendes

- 01 Spa et piscine
- 02 Belvédère
- 03 Lobby
- 04 Cafétéria
- 05 rdc
- 06 Centre d'affaire
- 07 niveau courant bureaux
- 08 restaurant panoramique
- 09 belvédère
- 10 plan de toiture



01



02



03



04





05



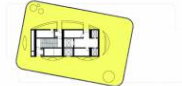
06



07



08



09



10