

Location
Shenzhen, China

Clients
HITSZ Harbin Institute of Technology &
Shenzhen Municipal Government avec
ISAAC Institute for Advanced Architecture of
Catalonia
ZHDK Zürcher Hochschule der Künste
(Zürich University of Arts)

Team
Ateliers 2/3/4/ (architect)

Nature of the project
Large buildings, Education, Interior design,
Espaces Publics

Program
International School of Design - HITSZ
University

Status
In progress

Area
103 430 m²

Calendar
Completion 2024

BIM
BIM 2 + BIM Management

Credits
©Ateliers 2/3/4/



The design school site at Harbin University in Shenzhen is like a valley, with the arid cliffs of existing high-rise buildings on its western side, and on its eastern side the lush expanse of greenery on a hill. The Design School is built around a major north-south axis intended to link the heart of the campus to the city.

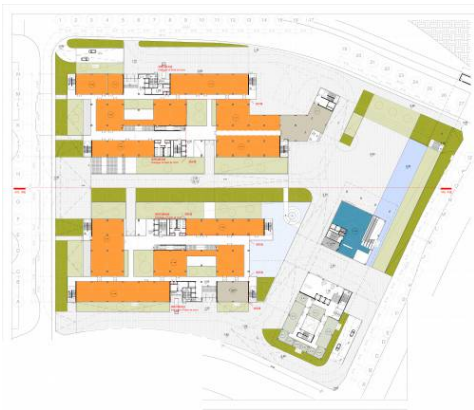
The design school is organised in a cluster. Its horizontal morphology associated with a grid-type geometry encourages a multiplicity of routes and places conducive to formal or informal meetings, which are essential supports for the creativity of its users. The major elements of the programme are

superimposed in three layers:

- The display centre, constituting the display spaces for student work, forms the base of the ensemble with the experimental sites (laboratories).
- The teaching area with the library is set in the central stratum.
- The research centre lies over the whole.

légendes

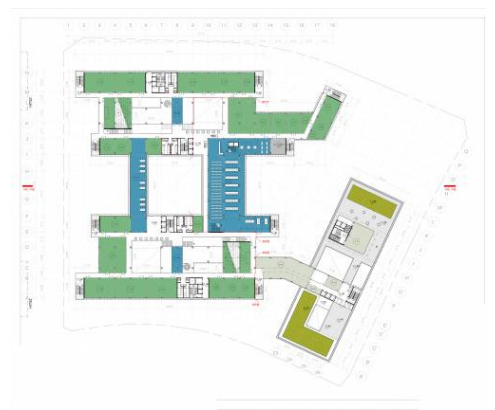
- 01 level 1
- 02 level 2
- 03 level 3



01



02



03

