

Location  
Paris

Clients  
Department of Paris

Team  
Ateliers 2/3/4/ (architect + landscape) - SAS  
MIZRAHI (engineers) - CICAD CONSULTANT  
(OPC) - RFR ELEMENTS (sustainable dev) -  
ABC DECIBEL (acoustician)

Nature of the project  
Education, Public equipment

Program  
Construction of a high school, a sports  
center and official accommodation in ZAC  
Clichy Batignolles, sector Saussure (Paris  
17th)

Status  
Built

Area  
7 203m<sup>2</sup>

Calendar  
Completion 2015

Cost  
17,98 M€ HT

HQE  
Plan Climat Ville de Paris

Construction compagnies  
HERVE SA - UTB - BALAS - FRAMACO -  
EURO-ASCENSEURS

Credits  
© Jean-Pierre Porcher



## Double orientation, double floor, double materiality

The urban features and orientation towards the sun determined the balance of this public facility. Thus, the L-shape of the building shields from the railways located to the north to protect the playground located south of the disturbance of noise.

A number of permeable features create a relationship between the project and the surroundings:

– the landscape aspect of the Saussure block via the forecourt planted with trees and the foyer of the gym.

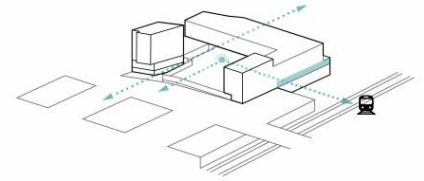
– that of the playground and the railway landscape via a large window overlooking

the tracks.

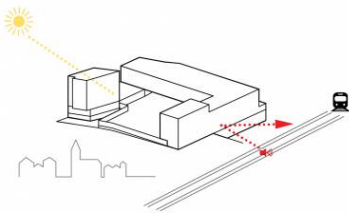
The mixed concrete and wood structure brings a feeling of lightness to the classroom area overlooking the gymnasium and of atmosphere, by leaving the wooden structure within visible. The aluminium wood windows extend the effects of continuity of a single – wooden – material within and of contrast with the exterior and the concrete pedestal of the gymnasium.

## légendes

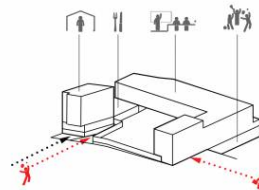
- 01 Perméabilités visuelles
- 02 Orientations et implantation urbaine
- 03 Implantation et volumétrie
- 04 Principe constructif



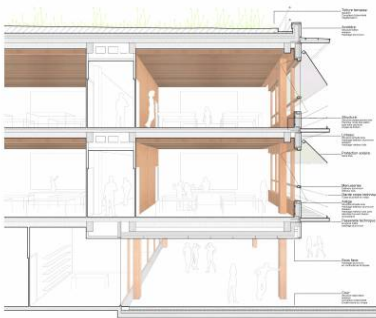
01



02



03



04

