

Location
Ornans

Clients
Conseil général du Doubs

Team
Ateliers 2/3/4/ (architect + landscape designer) - Cabinet Barrès (architect on site)

-
Guliver Design (graphic designer) - B. Paulet (landscape designer)

Nature of the project
Culture

Program
Refurbishment and extension of the Gustave Courbet Museum.

16 permanent exhibition rooms
5 temporary exhibition rooms

Offices, cafeteria

Historic garden

The La Loue spring landscaping

Refurbishment of the Courbet Family ferme in Flagey

Awards/Distinctions

Inscription in the Supplementary Inventory of Historic Monuments

French Museum

Ethnopole label

Status

Built

Area

2 040 m² (Museum)

Calendar

Completion 05/2011

Cost

12 M€ for the 3 sites

9.2 M€ Museum

Credits

©Nicolas Waltefaugle



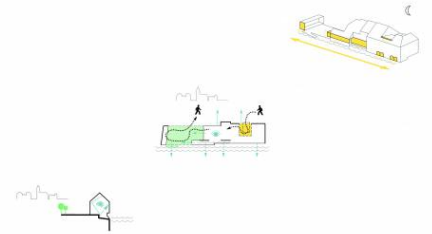
01

To express Gustave Courbet's relationship with the geographical, political and social spirit of the region, 2/3/4/ opened the building onto the Ornans landscape to bring the visitor into the presence of the light, color and materials of the « Region ». On numerous occasions along the museum itinerary, the visitor will rub shoulders with the Loue River and see distant ridgelines enter the building. Going to the source of the Loue and Flagey, this presence is also an invitation to continue with the landscape itself, the dialogue began in the museum; the painter's birthplace. These surroundings have also been developed to recall the museum.

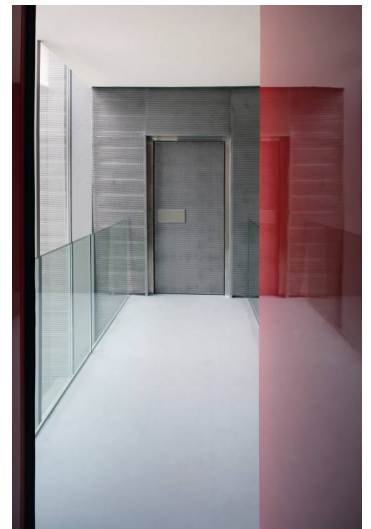
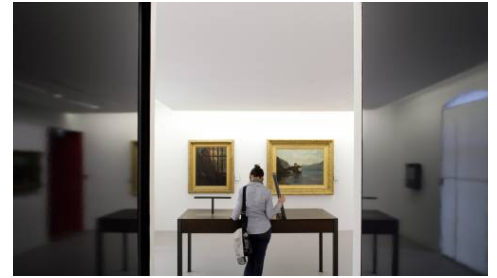
In turn, the exhibition design is a call for discretion in order to encourage a direct relationship with the artworks and the entire attention of the visitor. Joining the three houses is an opportunity, when passing through the party walls, to appreciate the depth of time and memory.

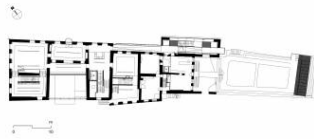
légendes

- 01 après réhabilitation
- 02 before refurbishment
- 03 ground floor
- 04 ground floor



02





03

04