

Location
Courbevoie

Clients
La Française Pierre (sketch phase at APD)
Sogeprom (from APD)

Team
Ateliers 2/3/4/ (architectur + design interior + landscape) - Kern (studies coordinator) - Gvi (economist) - Arcora (facade engineering) - Scyna4 (structural engineering) - Gesys (fluids engineering) - Etamine (sustainable development) - Peutz (acoustician) - CCI (elevator engineering) - Interface (kitchen engineering) - Socotec (control office)

Nature of the project
Tertiary, Restructuring

Program
Rehabilitation of a office building with two ERP on the ground floor

Status
Under construction

Area
12 000 m² including 860 m² ERP

Calendar
Completion 2021

Cost
32 M€ HT

HQE
HQE BÂTIMENT DURABLE 2016 NIVEAU EXCELLENT
BREEAM NEW CONSTRUCTION 2016 NIVEAU EXCELLENT
WELL CORE & SHELL NIVEAU GOLD
WIRED SCORE NIVEAU GOLD
BIODIVERCITY
LABEL EFFINERGIE RÉNOVATION

Credits
©Ateliers 2/3/4/



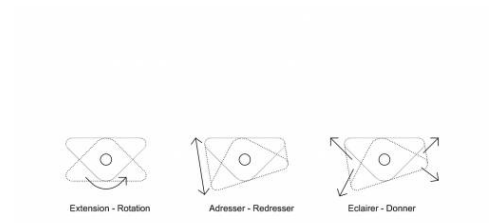
01

légendes

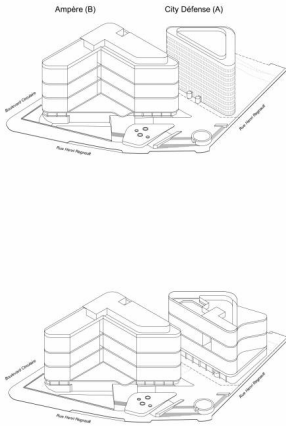
- 01 Etat projeté
- 02 Etat existant
- 03 Principe de division cellulaire ou MEIOSE
- 04 Situation Existante / Situation projetée
- 05 Façade composée en 3 strates



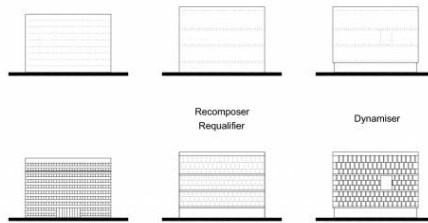
02



03



04



05



