

CIG, Centre Interdépartemental de Gestion (Interdepartmental Administration Centre)

1/3

Location
Versailles

Clients
CIG Versailles

Team
Ateliers 2/3/4/ (architect + landscape designer) - Mizrahi - ABC Décibels - L'eau (engineers)

Nature of the project
Tertiary

Program
An administrative building comprising 71 offices and meeting rooms distributed between the ground floor and first floor / A training room with 80 seats on the ground floor. / A 300-seat conference room on the ground floor.
A foyer serving as waiting area on the ground floor.
Storage, technical, cloakroom, housekeeping, maintenance and multipurpose rooms at garden level /150 parking spaces at garden level

Awards/Distinctions
Project presented at the BAP! Architecture and Landscape Biennale in Versailles in 2019.

Status
Built

Area
4 840 m²

Calendar
Completion in september 2017

Cost
11.4 M€

Sustainable development
Démarche HQE

Construction compagnies
Léon Grosse - Sogefi - JPV Bâtiments - De Cock - Frameto - ITB - Stepc - Léon Grosse électricité - Les Jardins de Gally

Credits
©Clément Guillaume



CIG, Centre Interdépartemental de Gestion (Interdepartmental Administration Centre)
Two pavilions: symbolic and functional, Versailles

Extending over 4,800 m² of existing public area, the CIG fits into the heart of a pavilion fabric. The building is designed almost entirely on stilts to house a quality parking lot. A forecourt serving as an access bridge aboard, slips between the two building units designed to reduce the volume of the whole. The planned functions follow this cut into two pavilions:

- One, more symbolic, houses all the shared services, conference and training rooms and the restaurant.
- The other, more functional, contains the

offices around an interior garden. A very simple plasticity ensures the necessary presence required by any institution without compromising the equilibrium of the neighbourhood. The most emblematic pavilion containing the shared functions is affirmed by a white, polished, precast concrete minerality. The office section is wrapped in an anodised aluminium curtain wall with glass panels including a walnut veneered panel (OKALUX).

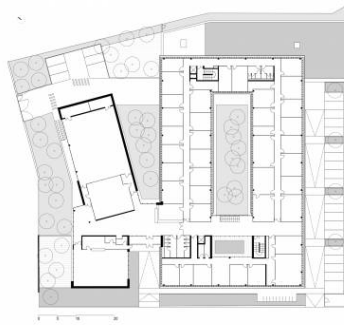
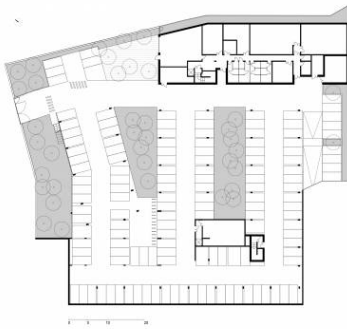
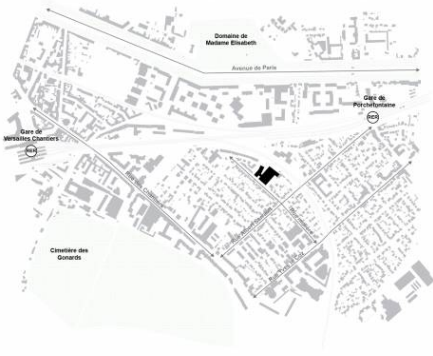
légendes

- 01 rez-de-jardin
- 02 ground floor



Ateliers 2/3/4/
www.a234.fr/en

• 2/3/4/ Paris 234, rue du Faubourg Saint Antoine, 75012 Paris - 234@a234.fr
• 2/3/4/ Montpellier 19 cours Gambetta, 34000 Montpellier - montpellier@a234.fr
• 2/3/4/ Shanghai 181, Middle Jiangxi Road, Huangpu District, Shanghai, China - shanghai@a234.fr



01

02

