

Basalte, Societe Generale Trading Room

1/4

Location
Puteaux

Clients
Nexity (developer) / Société Générale (owner)

Team
Ateliers 2/3/4/ (architect + landscape designer) - Artélia - Terrell - Ginger Ingenierie - Seth - Square - Atelier Totem - Bethode - Lasa) - A.T.H. - GVI (engineers)

Nature of the project
Large buildings, Interior design, Landscape design, Tertiary

Program
Construction of an office building :
5 floors of 3 500 m² open-space trading rooms, offices, conference rooms.
Retails and restaurant space, service spaces, computer rooms, archives rooms.
7 car park floors.

Awards/Distinctions
Prix européen de la construction métallique 2011

Status
Built

Area
43 000 m² (180m de long x 35m de large x 54m de haut)

Calendar
Livraison : 2013

Cost
220 M€ HT

BIM
BIM 1

HQE
Certification hqe « NF bâtiments tertiaires »

Credits
©Vincent Fillon - ©Nicloas Fussler



Marked by a heterogeneous urban landscape, the main challenge was to recreate a link between the floor slabs in La Defense and the natural foundation in Puteaux.

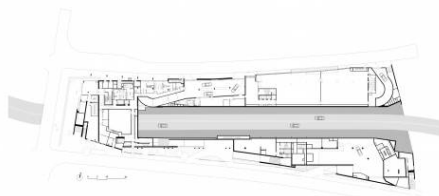
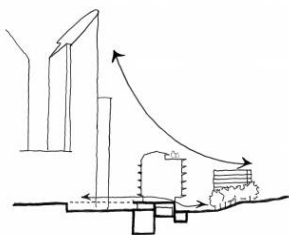
First, the Societe Generale project had to span an 180m underground bypass that cuts through the site without any interruption to traffic. The second issue was that of scale. On one hand, it was necessary to measure up to the monumental towers of the Societe Generale headquarters, on the other, down to the more domestic scale of the old city.

Finally, to daylight the huge 30m deep by 150m long single floor plates. Long passageways were built in facade along the north side with deep balconies as sunshades to regulate daylight from the

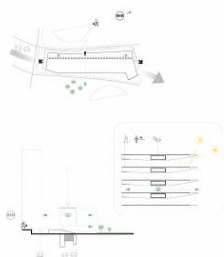
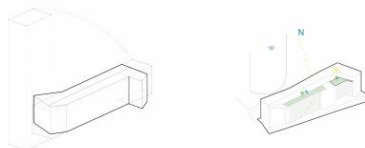
south. Further, these balconies inscribe bands that reinforce the horizontal configuration of the building to relate it to the ground level of the city. A steel structure was developed to reduce building loads and accommodate the large spans required due to the presence of the road bypass and the floor plates. The open trusses created voids where services and their maintenance are located without interfering with the office spaces.

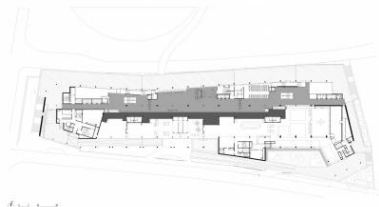
légendes

- 01 la RN314 a été mise en tunnel au-dessus duquel est construit l'immeuble
- 02 ground floor
- 03 current floor

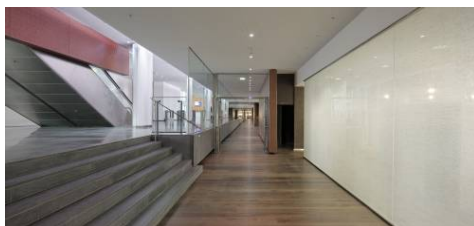
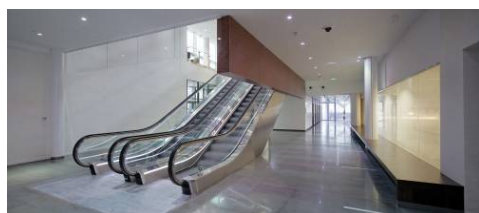
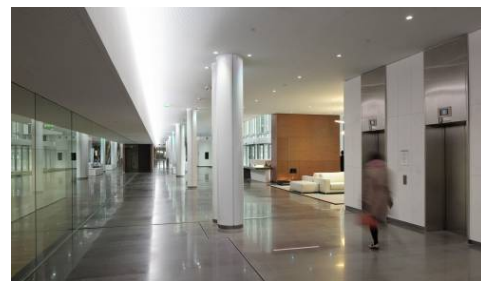
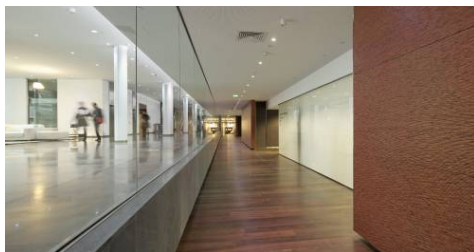


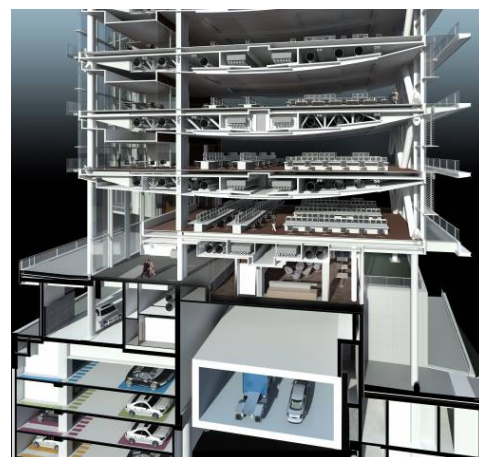
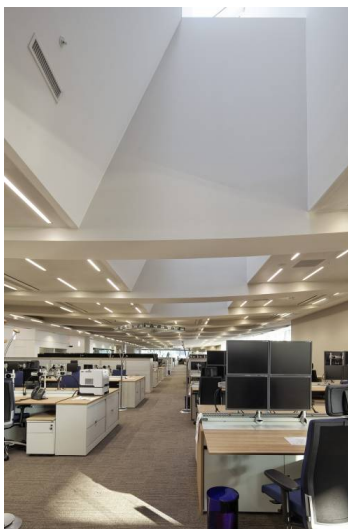
01





02





03

