

Austerlitz, office building of an insurance bank

1/3

Location
Paris

Clients
Altarea Cogedim

Team
Ateliers 2/3/4/ (architect) - Nathalie Junod Ponsard (artist - light artwork) - GV Ingénierie - Egis Bâtiment - Avel Acoustique - Systal - GESYS Ingénierie - Arcora (engineers) - Builders & Partners - Green Affair - Socotec - Gesys

Nature of the project
Tertiary, Interior design

Program
Office building on lot A9A1 comprising a building with 8 levels of superstructure, an atrium that serves as a hall, a 20-space car park, two shops on the ground floor, a cafeteria and an Inter-Entreprise restaurant

Awards/Distinctions
Façades2Build Awards, winner in the Tertiary category and Special BIM award for the Austerlitz building.

Status
Built

Area
14 600 m²

Calendar
Completion 2017

Cost
34 M€

Sustainable development
HQE 2011 Tertiaire Neuf Niveau EXCEPTIONNEL
BREEAM Office 2013 Niveau EXCELLENT
Label Effinergie +
Label Biodiversity Niveau PERFORMANT

Credits
©ArnauldDuboisFresney - ©WeAreContents



01

A large atrium which is both an interior garden surrounded by panoramic lifts and a foyer crossing open to the street and sky highlights the external space of the Austerlitz building, today the headquarters of a banking group.

The building sits next to the railway tracks of the station and is made of a metal frame. Numerous terraces extend the working spaces and offer a 180° view of the remarkable Paris skyline.

Realised with Altarea Cogedim this building is emblematic of new working methods: more than a place of individual production, it is a place of meeting and exchange, open to

the city, offering a new approach to mobility, flexibility, sharing and well-being.

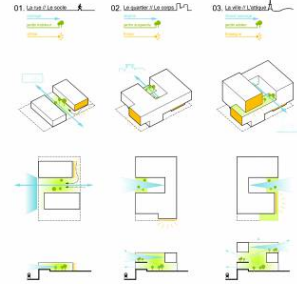
légendes

- 01 Nathalie Junod-Ponsard's permanent light installation: "the unfolding of light"
- 02 Interior layouts designed by Ateliers 2/3/4/
- 03 ground floor
- 04 level 5
- 05 rooftop



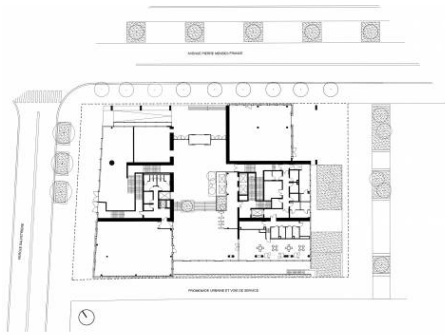
Ateliers 2/3/4/
www.a234.fr/en

• 2/3/4/ Paris 234, rue du Faubourg Saint Antoine, 75012 Paris - 234@a234.fr
• 2/3/4/ Montpellier 19 cours Gambetta, 34000 Montpellier - montpellier@a234.fr
• 2/3/4/ Shanghai 181, Middle Jiangxi Road, Huangpu District, Shanghai, China - shanghai@a234.fr

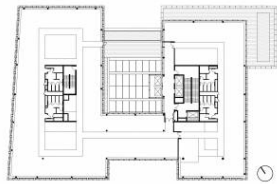


02

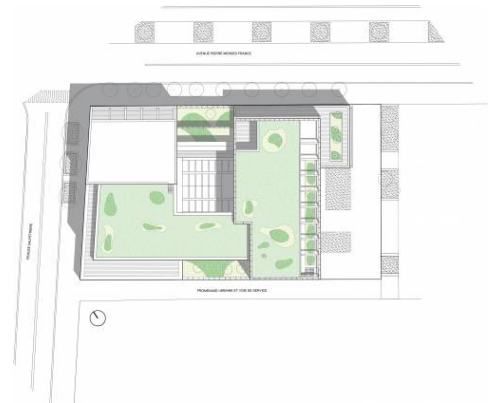




03



04



05