

# Ampère e+, sogeprom headquarters – refurbishment

1/3

Location  
Courbevoie

Clients  
Sogeprom  
Primonial (investor)

Team  
Ateliers 2/3/4/ (architect + Interior design) -  
Inex - Scyna4 - Arcora - Etamine - Peutz - GVI  
- Infra Services (engineers) - SOCOTEC  
(Control Office) - SSC (safety and health  
protection coordinator) - Batiss (Fire safety  
system coordinator)

Nature of the project  
Restructuring, Tertiary, Interior design

Program  
Refurbishment of an office building

Awards/Distinctions  
Green Solutions Awards 2017 International  
winner in the "Smart Building" category  
Trophée quartier d'affaire à Vivre 2017  
winner in the Restructuring category

Status  
Built

Area  
15 000 m<sup>2</sup>

Calendar  
Completion 2016

Cost  
28 M€

Sustainable development  
HQE niveau Excellent  
Breeam Very Good  
BBC Effinergie Rénovation  
Démarche d'économie circulaire et Label  
« Cradle-2-Cradle (C2C) inspired building »  
WELL Core and Shell & WELL Interiors

Construction compagnies  
SICRA (general contractor) - Goyer - Tenzini

Credits  
©Charly Broyez



The generation of 1970s and '80s office buildings is characterised by simple and repetitive geometries too often devoid of attention to the human and urban environment they address.

In order to remedy these malfunctions, the following was decided:

- To anchor the building within the city: a complementary volume has been built in the heart of the existing re-entrant angle. This modest volume offers an attractive entrance accompanied by a cafeteria space.
- To change the scale: a new horizontal order replaces the strict repetition of the levels.
- To dig down: triple-height loggias shelter small hanging gardens, establishing a new relationship of use between interior and exterior.

- To crown the top: the roof terrace is now used not only to finish the building but also to enjoy the magnificent panorama towards the forest of Montmorency.

This project of high environmental quality has been noticed by international critics and has received the Smart Building prize at the Green Solutions Awards.

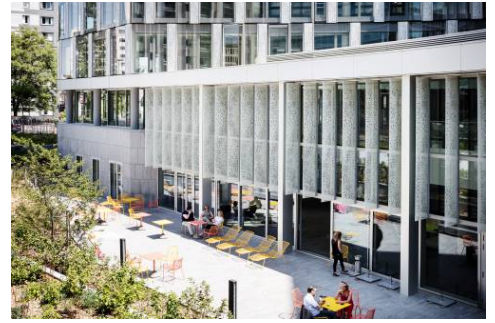
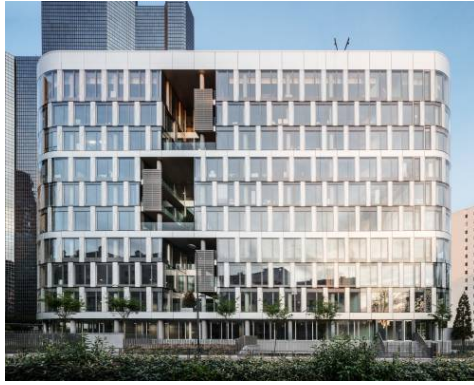
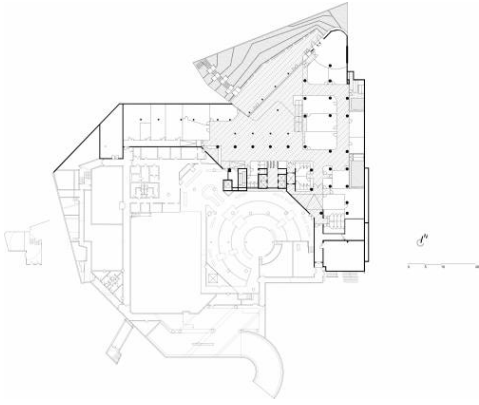
légendes

- 01 rdc
- 02 r+4
- 03 Avant restructuration
- 04 Apres restructuration
- 05 Avant restructuration
- 06 Apres restructuration

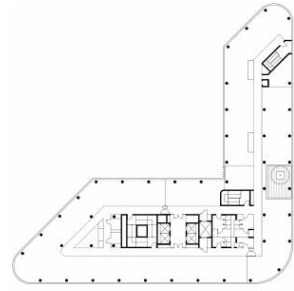
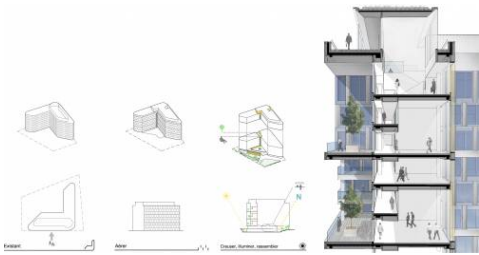


Ateliers 2/3/4/  
www.a234.fr/en

• 2/3/4/ Paris 234, rue du Faubourg Saint Antoine, 75012 Paris - 234@a234.fr  
• 2/3/4/ Montpellier 19 cours Gambetta, 34000 Montpellier - montpellier@a234.fr  
• 2/3/4/ Shanghai 181, Middle Jiangxi Road, Huangpu District, Shanghai, China - shanghai@a234.fr



01



02







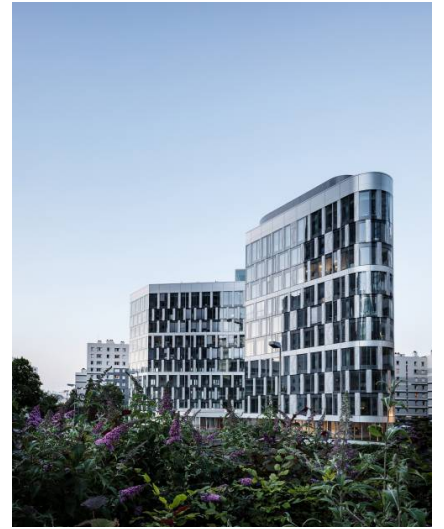
03



04



05



06