

# 44 housing units and gymnasium, cover green

1/3

## Location

Massy

## Clients

CIBEX & Ville de Massy

## Team

Ateliers 2/3/4/ (architect + landscape designer) - SCOPING - DJ. AMO - SARL ALTERNATIVE - QUALICONSULT (engineers)

## Nature of the project

Residential, Sport

## Program

Construction of 44 housing units and an ERP shell (Gymnasium) + 50 car parks

## Status

Built

## Area

Housing units 2 789 m<sup>2</sup>

Gymnasium 1 431 m<sup>2</sup>

## Calendar

Completion june 2020

## Cost

8,1 M€

## HQE

H&E NF LOGEMENTS

E+ / C- (label Energie + Carbone -)

NF HABITAT HQE

RT 2012

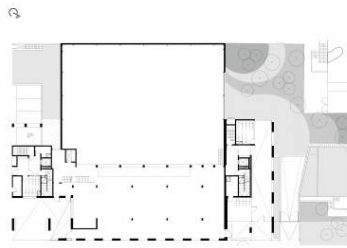
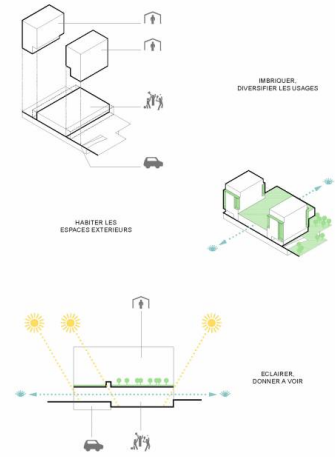


## légendes

- 01 plan de situation
- 02 ground floor



01



02

